

Residential Riser Assembly

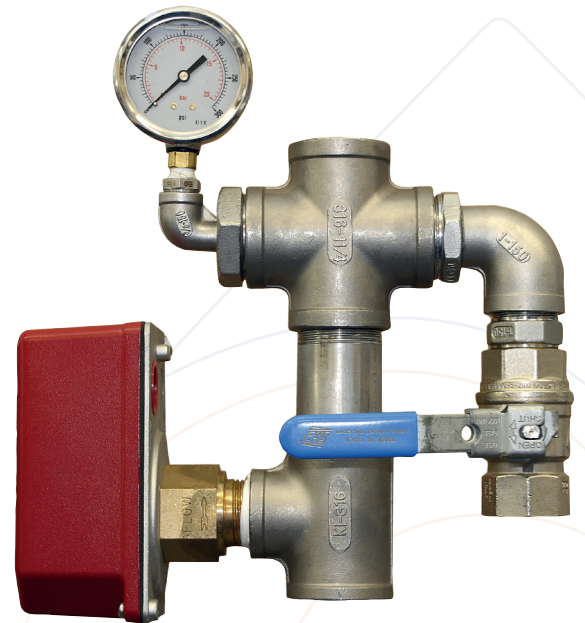
Sale Engineering Products offers a compact design residential riser assembly. A selection of options are illustrated in the images and data table below.

The unit is designed to be completely flexible in its configuration and use, and is intended for low volume applications. Therefore, rather than a standard 'take it or leave it' design that forces installation down a certain route, we can quickly assemble special units to your required configuration for no additional cost.

In addition, we use only LPC approved Potter VSR flow switches - something which some manufacturers in the market do not. If you would prefer to source your own flow switches then the units can be supplied without.

Key Features

- All stainless steel pipework (vertical or horizontal inlet)
- Potter VSR-S LPC approved flow switch
- 63mm glycerine filled pressure gauge
- Lockable brass ball valve for test and/or drain
- The following additional accessories are available with your order for resi riser assemblies:
 - WRAS approved lockable ball valves
 - WRAS approved double check valves with integral test point
 - BSP screwed-to-Blaze adaptors



Residential Riser Assembly Specifications

STYLE



Part No.	SEP-RR25	SEP-RR32	SEP-RR40	SEP-RR50
Size	1"	1 ¼"	1 ½"	2"
'BD' Height x Width cm (approximate)	32 x 29	28 x 25	29 x 31	32 x 29

For more information about our residential riser assembly please call +44 161 428 1180 or email info@saleengineering.co.uk and one of our sales team will be happy to talk you through the options and quote you our latest prices.

SEP are more than happy to discuss special product requirements if you do not see what you are looking for here.