

Accessories & Spares

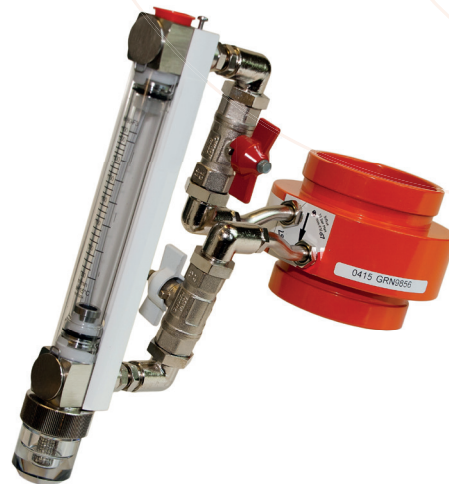
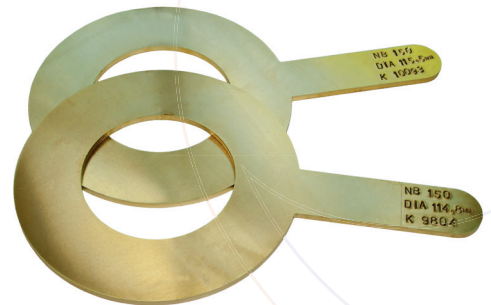
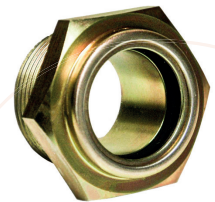
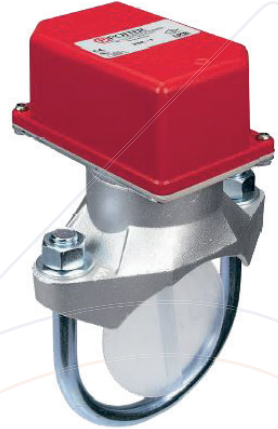
We stock a wide range of essential fire sprinkler system accessories and spare parts. If we don't stock it, we can certainly find it, and get it to you quickly.

The following are normally held in stock for next day delivery:

- Potter flow switches, VSR vane-type alarm switch with adjustable retard; multiple approvals; sizes 2"/50mm to 8"/200mm (VSR-EU, with up to 30 second retard); VSR-S (1" screwed) to suit threaded tees from 1"/25mm to 2"/50mm.
- Galvanised orifice unions, machined in-house with brass/bronze orifice plate (3mm orifice standard, or any other size to your requirement); sizes 1/2"/15mm to 2"/50mm.
- Sight glasses, providing low cost liquid indication; high temperature and pressure with flat quality glass, internal reflector and shock cushioned; sizes 1/2"/15mm to 2"/50mm

The following can be ordered for fast delivery:

- Orifice plates, brass or special materials, 3mm (normally for NB50-100), 6mm (normally for NB100-150) or 10mm (normally for NB150-200) stamped to include your required data.
- Potter flow switches such as 'VSR' (previously VSR-F, up to 90 second retard, 2-8") or VSR-SG (CPVC union connection).
- Flow meters such as Firesure or Platon, flanged or grooved, up to 8"/200mm.
- Pipework-to-go, any configuration to your requirement; for instance a recently designed pressure gauge/switch testing/setting device for both air and water, as pictured below.



Please contact us with your requirements – we pride ourselves on our responsiveness, flexibility and quality and are therefore happy to source whatever you require wherever possible – quickly and at the best price.